

POWERHOUSE™ HTD®

TIMING PULLEYS

8 mm Pitch

For 30 mm Wide Belts

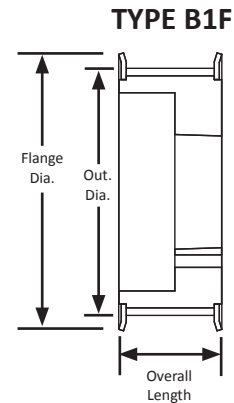
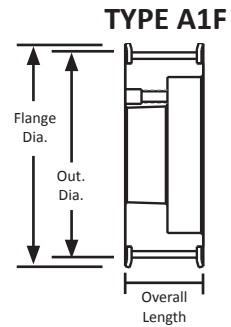
With Flanges

Steel/Iron

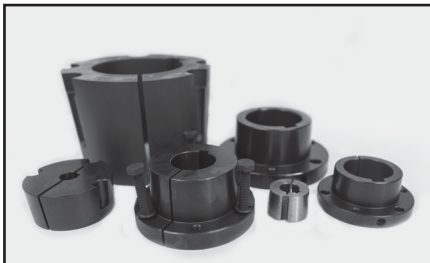
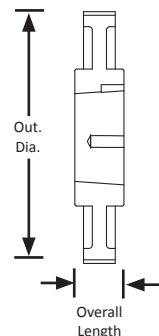
Black Oxide Plating



Part Number	No. of Teeth	Type	Pitch Dia. (in)	Out. Dia. (in)	Flange Dia. (in)	Bore / Bushing	Face Width (in)	Overall Length (in)	Hub Dia. (in)
22-8M30-6FS6	22	6F	2.206	2.152	2.559	0.500"	1.500	1.500	1.625
24-8M30-6FS6	24	6F	2.406	2.352	2.756	0.500"	1.500	1.500	1.812
26-8M30-6FS6	26	6F	2.607	2.553	2.953	0.500"	1.500	1.500	2.000
QD28-8M-30	28	E1F	2.807	2.759	3.150	H	1.500	1.500	-
QD30-8M-30	30	E1F	3.008	2.958	3.346	H	1.500	1.500	-
QD32-8M-30	32	B1F	3.208	3.156	3.543	H	1.500	1.500	-
QD34-8M-30	34	A1F	3.409	3.355	3.819	SH	1.500	1.500	-
QD36-8M-30	36	A1F	3.609	3.555	3.937	SH	1.500	1.500	-
QD38-8M-30	38	A1F	3.810	3.756	4.134	SH	1.500	1.500	-
QD40-8M-30	40	A1F	4.010	3.956	4.331	SH	1.500	1.500	-
QD44-8M-30	44	B1F	4.411	4.357	4.764	SDS	1.500	1.500	-
QD48-8M-30	48	B1F	4.812	4.758	5.157	SDS	1.500	1.500	-
QD56-8M-30	56	B1F	5.614	5.560	5.945	SDS	1.500	1.500	-
QD64-8M-30	64	C1F	6.416	6.362	6.772	SK	1.500	1.500	-
QD72-8M-30	72	C2F	7.218	7.164	7.598	SK	1.500	1.500	-
QD80-8M-30	80	C2F	8.020	7.966	8.386	SK	1.500	1.500	-
QD90-8M-30	90	C2	9.023	8.969	-	SK	1.500	1.500	-
QD112-8M-30	112	C2	11.229	11.175	-	SK	1.500	1.500	-



TYPE C2



For matching QD® bushings, see page 328.



For matching 8 mm POWERHOUSE™ HTD® pitch belts, see page 238.